

## Description

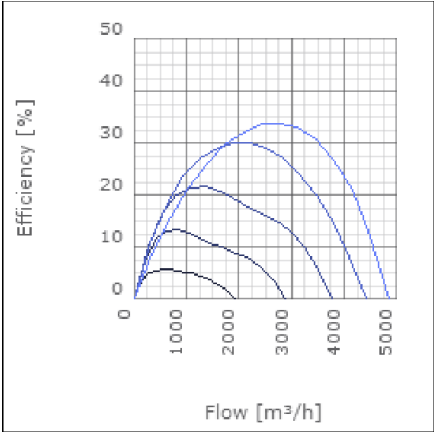
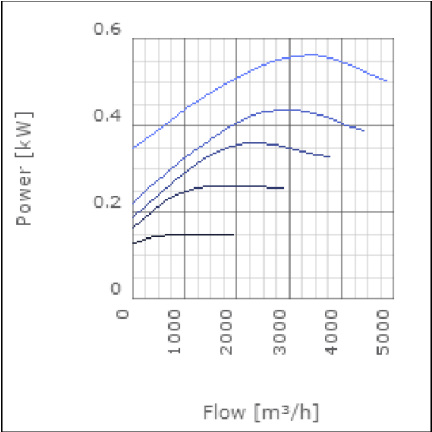
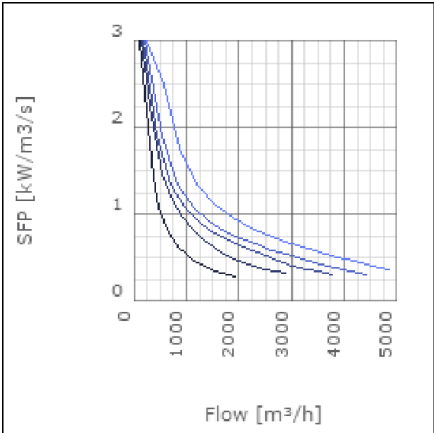
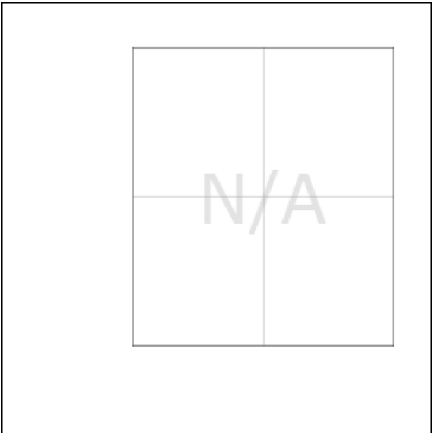
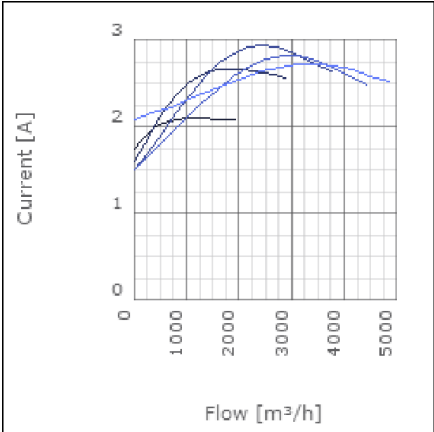
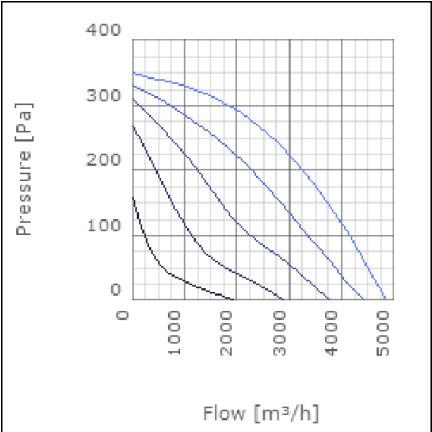
RKBI is an insulated centrifugal duct fan with connections for rectangular ducts. The fan have a rigid housing of galvanised steel and are compact with high capacity. With the 50 mm high quality insulation it operates quiet and the surface of the insulation is easy to clean. RKBI is available in 16 capacities. The backward curved impeller gives a better efficiency over a very big working area than the forward curved impeller. The fan is designed to cope with high pressures i.e. long ducts with a minimum of noise. The motor is speed-controllable from 0-100% and maintenance-free, why the only service required is cleaning the impeller. Motor with impeller can be swung out for inspection and cleaning (swing-out). The RKBI fan is supplied fully-wired and ready to fit in a sealed installation unit. It is moisture-proof and approved for use in warm or cold environments. All fans are fitted with a built-in thermal protector.



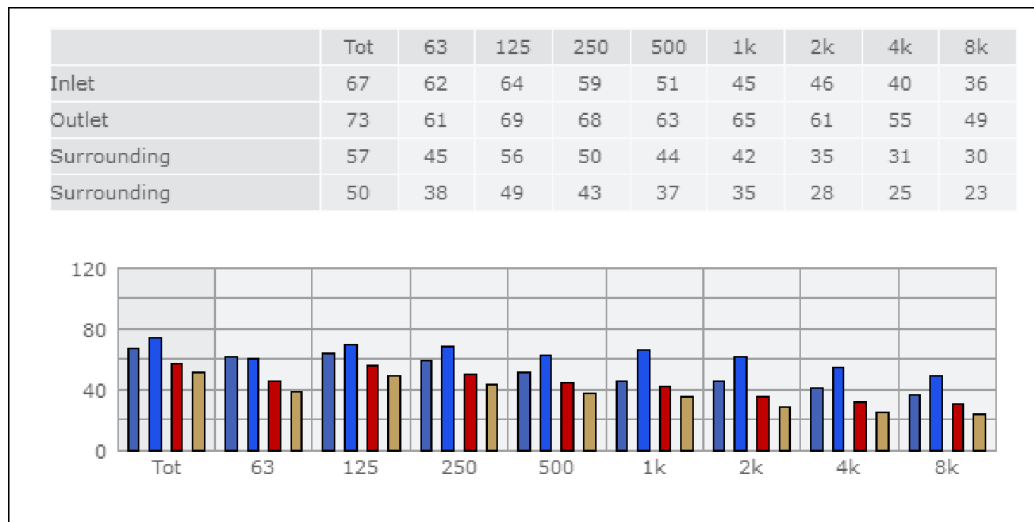
## Technical data

Parameter	Value	Unit
Voltage	230	V
Phase	1	~
Frequency	50	Hz
Power	0.56	kW
Current	2.73	A
R.p.m.	15	r/s
Max. temperature of transported air	40	°C
Max. temperature of transported air when speed-controlled	40	°C
Sound pressure level at 3 m	51	dB(A)
Length	817	mm
Width	807	mm
Height	549	mm
Weight	64.5	kg
Enclosure class, motor	44	IP
Insulation class, motor	F	
Capacitor	12	µF
Duct connection	700x400 mm	

Diagrams



## Sound



### Parameter

Distance: 3.000  
 Propagation type: Hemi-spherical  
 Equivalent absorption area: 20.00

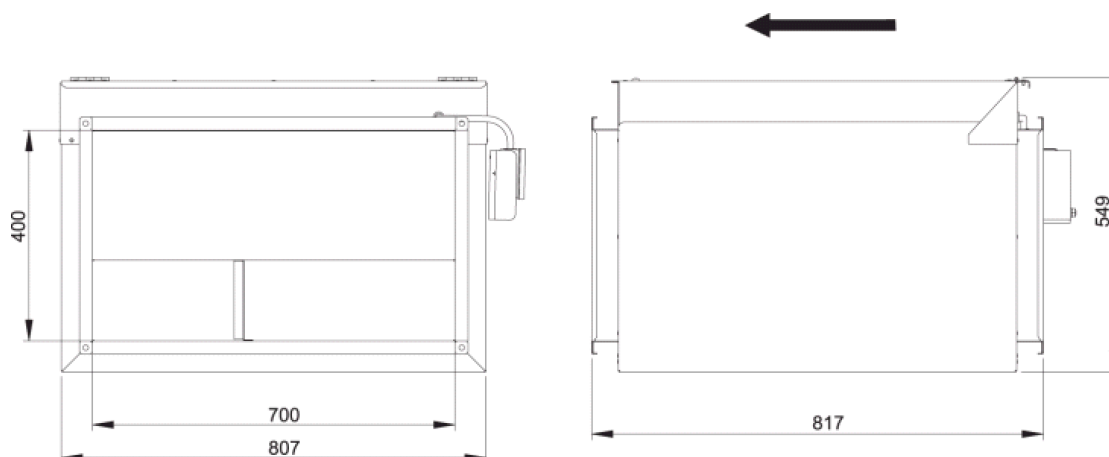
### Checked point

Flow 2812.95m<sup>3</sup>/h  
 Static pressure 241Pa

### Working point

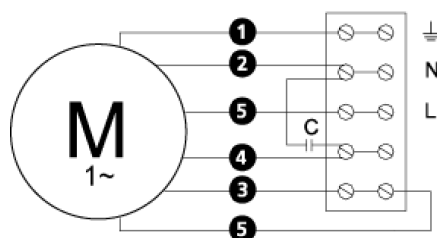
Flow 2814.095m<sup>3</sup>/h  
 Static Pressure 241Pa  
 Power 0.56kW  
 Speed 0r/s  
 Current 2.7A  
 Voltage 231V  
 Efficiency 33.917%  
 SFP 0kW/m<sup>3</sup>/s

## Dimensions



## Wiring diagram

4040005



- (M) = Fan Motor
- (M1) = Fan Motor
- (M2) = Fan Motor
- (M3) = Rotor Motor
- 1 = Yellow/Green
- 2 = Black
- 3 = Blue
- 4 = Brown
- 5 = White (TW)
- 6 = Orange
- 7 = Grey
- 8 = Red
- 9 = Green
- 10 = Violet

## Accessories

ETFV-94A  
FRE 6  
VRDE 3  
VRS 4,0  
VRTE 3

## Electrical accessories

FLR 700x400  
DS 700x400  
LDR 700x400